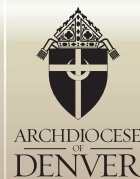




THRESHOLDS OF CONVERSION



Threshold: the magnitude or intensity that must be exceeded for a certain reaction, phenomenon, result, or condition to occur or be manifested.

1

Building a Bridge of Trust

"This is how all will know that you are my disciples, if you have love for one another." - Jn. 13:35

What Happens:

A person is able to trust or has a positive association with Jesus Christ, the Church, a Christian believer, or something identifiably Christian.

What It's Not:

Trust is NOT the same as personal faith. Trust does not indicate whether or not someone has ever really prayed or whether they have ever had a personal encounter with Jesus Christ.

How to Cross the Threshold:

- Form authentic personal relationships
- We cannot evangelize what we do not love!



4

Serious Seeking

"Jesus turned and saw them following him and said to them, "What are you looking for?" - Jn 1:38

What Happens:

The person moves from being essentially passive to actively seeking to know the God who is calling him or her. It is, if you will, "dating with a purpose" but not yet marriage. Seekers are asking, "Are you the one to whom I will give myself?"

What It's Not:

Though close, seeking is not intentional discipleship. A person may be on the boat and have all the gear, but they are not yet fishing.

How to Cross the Threshold:

- Introduce the person to the works of mercy
- Teach about different prayer traditions and practices
- Help them confront and wrestle with personal sin

2

Arousing Curiosity

"Sir, give me this water, so that I may not be thirsty or have to keep coming here to draw water." - Jn. 4:15

What Happens:

A person finds himself intrigued by or desiring to know more about Jesus, his life, and his teachings or some aspect of the Christian faith. This can range from a mere awareness of a new possibility to something quite intense.

What It's Not:

A person at the threshold of curiosity is not open to personal change. This is often mistaken for serious seeking but curiosity comes upon the person in that threshold, serious seeking is an active step rather than a passive response.

How to Cross the Threshold:

- Curiosity needs to be directed toward the person of Jesus Christ
- Tell stories about Jesus' life and your own relationship with him
- "You can easily quench inquiries by drowning a teaspoon full of curiosity with a gallon of answers"

5

Intentional Discipleship

"Master to whom shall we go? You have the words of eternal life. We have come to believe and are convinced that you are the Holy One of God." - Jn 6:68-69

What Happens:

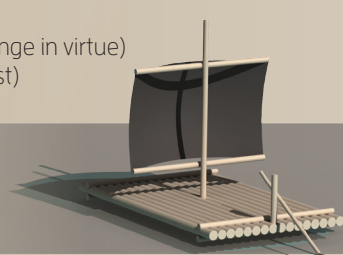
This is the decision to "drop one's nets," to make a conscious commitment to follow Jesus in the midst of his Church as an obedient disciple and to reorder one's life accordingly.

What It's Not:

This is not the end of anything. Intentional Discipleship is the beginning of a long and fruitful journey toward Heaven.

How to Cross the Threshold:

- Pray ardently and be aware of the devil
- Try to remove obstacles:
 - Personal Sin - (Encourage and Challenge in virtue)
 - Wounds - (Healing from Body of Christ)



3

Opening to Change

"Not everyone who says to me, 'Lord, Lord,' will enter the kingdom of heaven, but only the one who does the will of my Father in heaven." - Mt 7:21

What Happens:

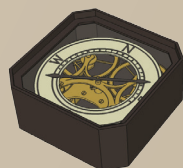
A person acknowledges to himself and to God that he is open to the possibility of a personal and spiritual change.

What It's Not:

This is not Intentional Discipleship. Being open does not mean that a person is necessarily ready to change their life.

How to Cross the Threshold:

- Witness to your own change
- Show them how God is working in their life
- Have them ask God for a sign
- Ask if you can pray for their openness
- Ask them to pray to become more open



Threshold Assessment Questions:

1. Do you believe in God?
2. What kind of God do you believe in? (Personal or impersonal)
3. Do you believe in the possibility of a relationship with this God?
4. Do you have a relationship with this God? What kind of relationship?
5. Are you a part of a religious tradition? Which tradition? Are you Christian?
6. Do you have a positive association with Jesus or the Faith?
7. Do you have a relationship with Jesus Christ? Do you pray? How do you pray?
8. Is your faith something that causes you to change how you live your life?

*Content for Thresholds and other materials taken from *Forming Intentional Disciples* by Sherry Weddell